

## EHG tube laser cuts

### Rapid, precise, efficient and cost-saving.

The benefits of state-of-the-art EHG tube laser cutting are enormous, for it replaces classic machining methods in just a single process step.

**We deliver solutions. We've expanded our range of services for you: we now provide EHG tube laser cuts as well.**

In addition to the classic pipe sector, we now also offer tube laser cuts featuring the high precision you expect from EHG. For you this means extra quality, enabling you to benefit from improved competitive capacity.

### Optimised efficiency throughout the process

Several process steps such as sawing, drilling and milling are combined. That saves machining and throughput times and improves process reliability.

New options are created for downstream processes, e.g. the welding of tubular steel:

- Quicker fitting or welding of tubular steel
- Connecting with slotted/pin connections
- Simplification via kinking of semi-separated pipes
- High-precision intersections

**Using EHG tube laser cuts reduces the amount of time required, compared to conventional machining, by 20-80%.**

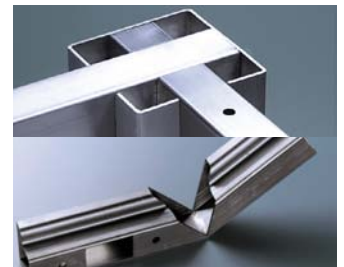
### More options, less effort.

EHG tube laser cutting produces parts from construction steel, chromium steel and aluminium with maximum precision, even with very thin wall thicknesses. This enables constructive elements such as the precision-fit joints of two parts to be implemented in a single work step.

We machine tubes from 12 to 220 mm and bars with a weight of up to 35 kg/m. In addition to round, square and rectangular tubes, open profiles and special cross-sections are also possible. With such diversity, one thing always remains the same: EHG tube laser cutting guarantees maximum quality and precision with any type of cross-section.

**Optimise your costs in the short-term with EHG tube laser cuts. In the long term you achieve genuine competitive advantages in the market thanks to new technical options, more efficient processes and higher quality.**

**EHG Stahl.Metall**  
We deliver solutions.



### Technical data

**Shaped pipes**  
200 x 200 mm

**Round pipes**  
max. D250 mm  
min. D12 mm

**Larger dimensions**  
on request

**Profiles**  
on request

**Thickness according to material**  
Steel: 8 mm  
Chromium steel: 6 mm  
Aluminium: 4 mm

**Finished part length**  
max. 7 metres

**3D/2D cuts**  
possible

**Workable data formats**  
3D-Step files,  
dxf, dwg, pdf, etc.

### AUSTRIA

EHG Stahlzentrum  
Wallenmahd 54  
6850 Dornbirn  
Austria  
T +43 5572 391-0  
F ext. -5100  
dornbirn@ehg-stahl.com

EHG office in Vienna  
T +43 1 203 31 51-640  
wien@ehg-stahl.com

EHG office in Kirchham  
T +43 7619 27 0 75-620  
kirchham@ehg-stahl.com

### GERMANY

EHG Stahl.Metall Baienfurt  
T +49 751 8887-0  
baienfurt@ehg-stahl.com

EHG Stahl.Metall Odelzhausen  
T +49 8134 55 77-0  
odelzhausen@ehg-stahl.com

EHG Stahl.Metall Waldstetten  
T +49 7171 798969-0  
waldstetten@ehg-stahl.com

### SWITZERLAND

EHG Stahl.Metall  
Altstaetten  
T +41 71 757 38 00  
altstaetten@ehg-stahl.com

### ROMANIA

EHG Steel.Metal SRL  
T +40 372 652 976  
bucharest@ehg-steel.com