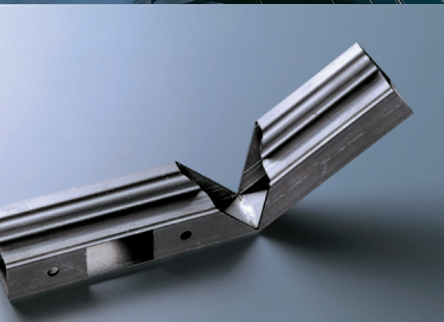
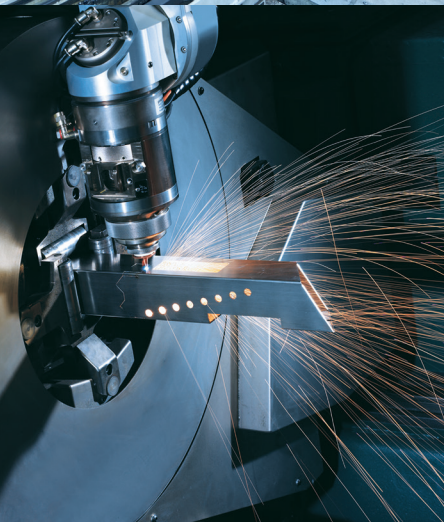


EHG steel/construction steel:
more than 15,000 tonnes and
5,000 dimensions of sheet metal,
steel bars/beams and steel tubes/
hollow sections in stock.

Extract from the EHG stock programme.

Entire
stock programme
in the EHG online shop:
www.ehg-steel.com





Processing from EHG: State-of-the-art technology means better quality.

Processing of the highest quality with minimal tolerances is a core competency at EHG. Our experienced employees have the know-how, and our machinery is some of the most modern in Europe, so we can be relied on to provide exactly what our customers need.

EHG processing – products and services

Long products / tubes / hollow sections

- Sawing
 - Round: 6-860 mm
 - Flat: 10x3 mm to 1000x800 mm
 - Square/tubes: 8x8 mm to 800x800 mm
- Mitre cutting
- Deburring
- Tube laser cutting
- Vibratory finishing (trowalising)
- Shot blasting and conservation
- Washing
- Bending
- Galvanising (electro & hot-dip galvanising)

Flat products

- Plate sawing
- Flame cutting
- Plasma cutting
- Slitting and transverse cutting
- Edging
- Stress-relieving annealing
- Surfacing
- Drilling, milling and roughing
- Surface treatments

EHG steel plate cut lengths – your benefits

- No hard edges, the material can be machined immediately without annealing.
- Sawn edges mean lower tool costs when machining – no edge hardening.
- All cut lengths are standardised.
- Subsequent stress-relieving annealing, depending on the material.
- Tolerances: Standard saw tolerance: -0/+3 mm.
Sheet thicknesses up to 100 mm: Tolerance on request (-0/+0.30 mm possible).
- Lower machining costs.
- Fewer material costs due to lower saw tolerances.
- Trapezoidal or triangular cutting by line laser.
- Small batch production and serial cutting.
- Heat treatments: stress-relieving annealing, soft annealing, normalising, tempering.
- Parts can also be blasted, milled or disc-ground.

EHG tube laser cuts – machining range

Dimensions

Square tubes:	12x12 – 180x180 mm
Rectangular tubes:	10 – 140 mm per side, max. 110 mm difference between sides
Round tubes:	ø 12 – 254 mm
Flat material:	40x5 – 120x10 mm
L-/C-/U-shaped profiles:	30x20 – 70x70 mm (area 1), 55x30 – 120x120 mm (area 2)
Special cross-sections:	many shapes are possible, dimensions on request.

Thread cutting

M4 – M16

Max. weight

37.5 kg/m or 225 kg in total

Friction drilling

M4 – M12

Max. length of finished part

8050 mm

Max. material thickness

Structural steel:	10 mm
Stainless steel:	6 mm
Aluminium:	5 mm
Copper:	2 mm
Brass:	3 mm

Processable file formats

DSTV, DWG, DXF, GEO, GRA, IGES, IGS, JPG, PDF, STEP, TIF, X_B, X_T

EHG online shop:
ehg-steel.com



Countless grades and dimensions of sheet metal, steel bars/beams and steel tubes/hollow sections are available from stock.

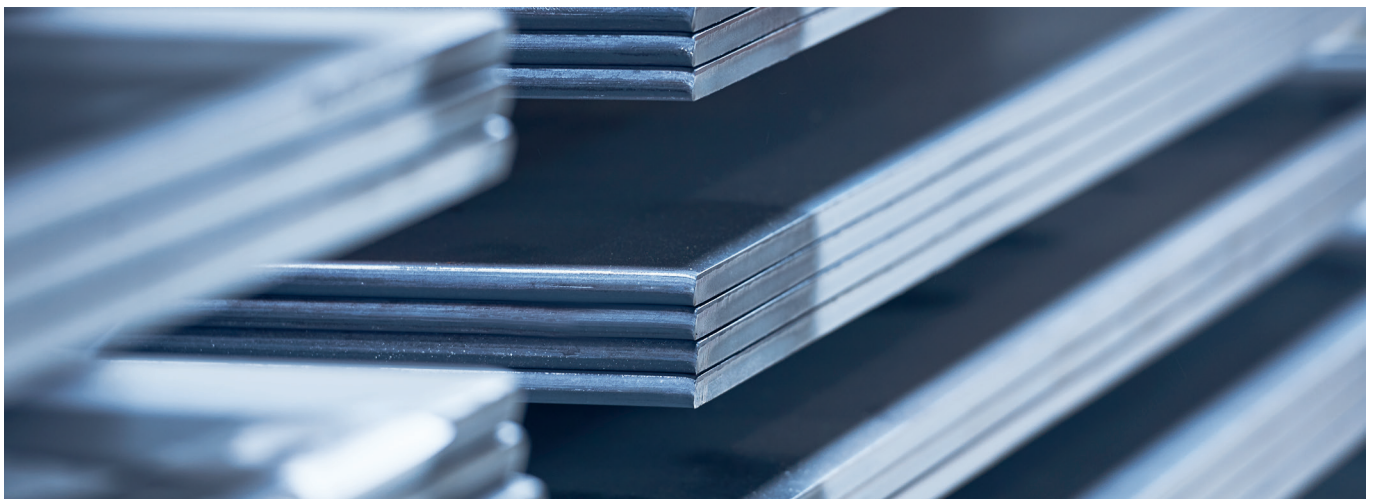
EHG has one of the best-stocked steel and metal warehouses in the whole of Central Europe. We keep our warehouses extremely well-stocked, use ultra-modern machinery and run our own vehicle fleet, so we can meet virtually any customer

request professionally and promptly. You benefit from maximum availability and high-speed delivery – just in time, of course.

EHG Steel.Metal: we deliver solutions.

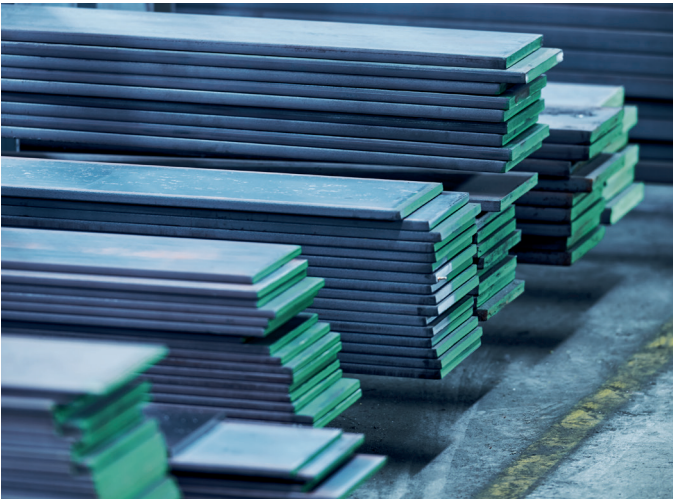
Sheet metal

Steel sheets		Dimension			Format
DX51D+Z275NA	Sendzimir galvanised	0.60	to 4	mm	NF/MF/GF
DC01+ZE 25/25 AP	electrolytically galvanised	0.75	to 3	mm	NF/MF/GF
DC01A	cold-rolled	0.50	to 2.99	mm	NF/MF/GF + XL
DC04A	cold-rolled	1.00	to 2.99	mm	NF/MF/GF
DD11	pickled and oiled	1.50	to 12	mm	NF/MF/GF + XL
S235JR	black	2.00	to 30	mm	NF/MF/GF
S235JR	pickled and oiled	3	to 20	mm	GF
Teardrop plate S235JR		3	to 10	mm	NF/MF/GF
S355MC	black	3	to 10	mm	MF
S355MC	pickled and oiled	1.50	to 20	mm	NF/MF/GF
S355J2+N	black	3	to 50	mm	GF + XL
S355J2+N	pickled and oiled	4	to 12	mm	GF
S460MC	pickled and oiled	3	to 10	mm	GF
S700MC	black	3	to 15	mm	MF/GF
Hardox 450		3	to 25	mm	GF
Corten		1	to 10	mm	GF
Corrugated sheet metal	galvanised/Aluzinc	0.60		mm	LG 1.50-7 metres
Corrugated sheet metal	brown coated	0.60		mm	LG 2-6 metres



Steel bars/beams

Steel bars	Grade	Dimension			
Flat steel	hot-rolled S235JR	10/3	to	150/60	mm
Wide flat steel	hot-rolled S235JR	160/6	to	450/10	mm
Square steel	hot-rolled S235JR	6	to	100	mm
Round steel	hot-rolled S235JR	6	to	100	mm
Equal angle steel	hot-rolled S235JR	20/20/3	to	200/200/20	mm
Unequal angle steel	hot-rolled S235JR	30/20/3	to	200/100/14	mm
Hot-dip galvanised angle steel	hot-rolled S235JR	25/25/3	to	50/50/5	mm
U profile	hot-rolled S235JR	30/15/4	to	65/42/5.5	mm
Equal-sided T profile	hot-rolled S235JR	20/20/3	to	140/140/15	mm
Wide-flanged T profile	hot-rolled S235JR	30/60/5.5	to	50/100/8.5	mm
S235JR beams					
UNP beam	S235JR	80	to	300	mm
INP beam	S235JR	80	to	300	mm
IPE beam	S235JR	80	to	300	mm
HEA beam	S235JR	100	to	300	mm
HEB beam	S235JR	100	to	300	mm
HEM beam	S235JR	100	to	300	mm
S355J2 beams					
UNP beam	S355J2	80	to	400	mm
UPE beam	S355J2	80	to	300	mm
INP beam	S355J2	200	to	240	mm
IPE beam	S355J2	100	to	500	mm
HEA beam	S355J2	100	to	500	mm
HEB beam	S355J2	100	to	500	mm
HEM beam	S355J2	100	to	140	mm



Steel tubes/hollow sections

	Grade	Standard	Dimension		
Seamless threaded tubes black & galvanised	S195T	EN10255-M	3/8 to 4	inch	
Seamless threaded tubes black & galvanised	S195T	EN10255-H	1/2l to 2	inch	
Seamless heating tubes	P235	EN10216-1	OD* 25.0 to 323.9	mm	WT** 2.0 to 7.1 mm
Seamless hydraulic tubes black and electro-galvanised	E235+N	EN10305-4	OD 6.0 to 42.0	mm	WT 1.0 to 5.0 mm
Seamless precision steel tubes	E235+C	EN10305-1	OD 6.0 to 130.0	mm	WT 1.0 to 10.0 mm
Seamless heavy or thick wall tubes	S355J2H	EN10210-1	OD 20.0 to 610.0	mm	WT 2.3 to 100.0 mm
Welded threaded tubes black & galvanised	S195T	EN10255-M	3/8 to 4	inch	
Welded threaded tubes black & galvanised	S195T	EN 10255-H	3/4 to 2	inch	
Welded steel tubes	S235 P235	EN10219-1 EN10217-1	OD 30.0 to 355.6	mm	WT 2.0 to 10.0 mm
Welded precision steel tubes	E235+C	EN10305-3	OD 10.0 to 100.0	mm	WT 1.0 to 3.0 mm
Welded structural and handrail tubes	S235	EN10219	OD 1/2 (21.3) to 2 (60.3)	inch	WT 2.0 to 3.2 mm
Threaded bars black & galvanised	4.6 / 8.8		M5 to M36		
Shaped or section tubes, black & bright	S235 S275 E220	EN10219-1 EN10305-5	10x10 20x10 to 100x100 120x80	mm	WT 1.5 to 5.0 mm
Light steel U-sections	S235	EN10162	15x15x15 to 80x200x80	mm	WT 1.5 to 6.0 mm
Light angle steel sections	S235	EN10162	15x15 to 80x60	mm	WT 1.5 to 4.0 mm
Hot-formed hollow sections	S355J2H	EN10210	40x40 to 500x300	mm	WT 2.9 to 16 mm
Cold-formed hollow sections	S235JRH S355J2H	EN10219	40x40 to 400x200	mm	WT 3.0 to 10.0 mm

* OD = outer diameter **WT = wall thickness

EHG. **Strength as a group.**

AUSTRIA

EHG Stahlzentrum GmbH & Co OG

Wallenmahd 54 | 6850 Dornbirn | Austria
T +43 5572 391-0 | dornbirn@ehg-stahl.com

EHG office in Vienna

Leopold-Boehm-Strasse 10 | Level D, Top D49-D51 | 1030 Vienna | Austria
T +43 1 203 31 51-2640 | wien@ehg-stahl.com

EHG office in Kirchham

Nr. 33 a | 4656 Kirchham | Austria
T +43 7619 27 0 75-2620 | kirchham@ehg-stahl.com

GERMANY

EHG Stahl.Metall Baienfurt GmbH

Eisenbahnstrasse 6 | 88255 Baienfurt | Germany
T +49 751 88 87-0 | baienfurt@ehg-stahl.com

EHG Stahl.Metall Aichach GmbH

Joseph-von-Fraunhoferstrasse 6 | 86551 Aichach | Germany
T +49 8251 86 13 77-00 | aichach@ehg-stahl.com

EHG office in Cadolzburg

Sky Center | Schwadermuehlstrasse 3 | 90556 Cadolzburg | Germany
T +49 9103 71 90 800 | cadolzburg@ehg-stahl.com

EHG Stahl.Metall Heubach GmbH

Benzstrasse 13 | 73540 Heubach | Germany
T +49 7173 710-9200 | heubach@ehg-stahl.com

EHG Stahl.Metall Bad Oeynhausen GmbH

Mindener Strasse 14 | 32547 Bad Oeynhausen | Germany
T +49 57 31 18 00-0 | badoeynhausen@ehg-stahl.com

Pader-Stahl Handels-GmbH

Halberstaedter Strasse 85 | 33106 Paderborn | Germany
T +49 5251 877 37-0 | info@pader-stahl.de

SWITZERLAND

EHG Stahl.Metall Altstätten AG

Unterfeldstrasse 8 | 9450 Altstaetten (SG) | Switzerland
T +41 71 757 38 00 | altstaetten@ehg-stahl.com

ROMANIA

EHG Steel.Metal SRL

Str. Delea Veche Nr. 24 | Corp A, Et. 6, Modul M2 | 024102, Sector 2 - Bucharest | Romania
T +40 372 652 976 | bucharest@ehg-steel.com